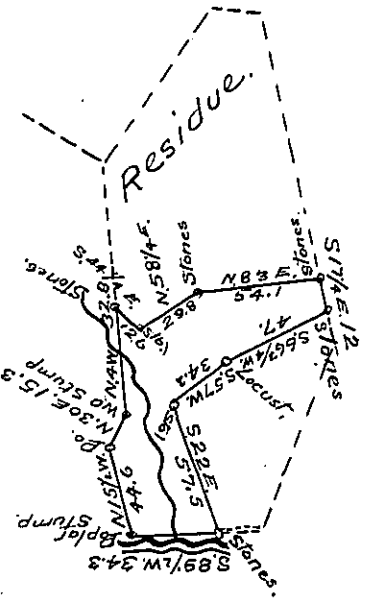


Martin Spielman  
In Right of Felix Mellan.



Timothy Moan.

Situate on Yellow Creek in Hopewell Township  
Bedford County Containing 19 acres 138 perches, and  
the usual allowance of Six per Cent. for Roads &c.  
Surveyed the 21<sup>st</sup> Augt. 1869 <sup>for John Gates & Co.</sup> Being a part of a  
larger tract of land Containing 93<sup>as</sup> 129 perches &  
allow. Originally surveyed on Warrant to John Gates  
dated 10<sup>th</sup> day of March 1843.

Sam! Ketterman  
C. S.

To J. M. Campbell Esqr. }  
S. G. }

IN TESTIMONY that the above is a copy of the original remaining on file in  
the Department of Internal Affairs of Pennsylvania, made  
conformably to an Act of Assembly approved the 16th day of  
February, 1833, I have hereunto set my Hand and caused  
the Seal of said Department to be affixed at Harrisburg,  
this Sixth day of February 1905.

*Loac R. Perry*  
Secretary of Internal Affairs